

Welcome to a place where you
won't be the only one
flocking to.

Srihti





Welcome to Srishti

A 12.5 acre abode in Shipra Suncity, Srishti offers the most premium apartments along a lush green landscape. Migrate, and you'll discover why it attracts the nature's most exotic ones.



Shipra Group, a premier real estate development company, has been making living a luxurious experience for the last two decades.

It has become the name behind many integrated townships, malls, multiplexes, hotels, IT and business parks.

The Shipra Group, today, is more environment-friendly. Thanks to Srishti, an exotic residential township spread over 12.5 acres

and located in the heart of the Shipra Suncity, Indirapuram. With landscaped gardens and a lagoon,

Srishti makes for a rare sight. So close to nature and yet all the nests and dens house every conceivable modern amenity.

Welcome to Srishti, the place where you can take nature's most exotic ones for evening walks.



SRISHTI PROJECT HIGHLIGHTS:

- Closely connected to the National Capital.
- Just opposite the Electronic City, Noida.
- Educational institutions like reputed schools, engineering colleges, IT & software companies at a walking distance. Project situated near to the Shipra Mall.
- Adjacent to the upcoming habitat center.

- 12.5 acres of Life, Scientific Space Management.
- 3BHK, 4BHK, penthouses with excellent interiors & a harmonious exterior.
- 2.6 acres of landscaped park with lagoons, water cascade, pool Deck Pergola.
- Eco-friendly gardens with plantations.

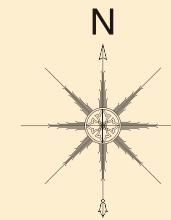
- * 20,000sq.ft., club with international standard facilities like meditation, yoga centers, card room, library, community center.
- * Swimming pool complex with splash, spa, jacuzzi, party lawns.
- * Special play area for kids.





FEATURES AND AMENITIES

- 1) ENTRANCE PLAZA
- 2) WATCHMAN'S CABIN
- 3) DROP OFF PLAZA
- 4) SWIMMING POOL
- 5) PADDLE POOL
- 6) POOL DECK
- 7) CLUB HOUSE DOWN AT UPPER BASEMENT LEVEL
- 8) YOGA & MEDITATION CORNER
- 9) PAVILION
- 10) JOGGING TRACK
- 11) SAND PIT
- 12) GREEN BUSH
- 13) RESTING PAVILION
- 14) TENNIS COURT
- 15) PERGOLA
- 16) MOUNDS
- 17) FLOWER GARDENS
- 18) PARTY LAWN
- 19) PUTTING GREENS
- 20) OLD FOLK GARDEN WITH FOOT REFLEXOLOGY
- 21) WATER FEATURE
- 22) GAZEBO



conceptual layout

unit specifications

WALL FINISH

Internal	Plastered, P.O.P. and painted in pastel shades of plastic emulsion, ceiling white.
External	Texture paint.

FLOORING

Drawing	Vitrified tiles.
Bedrooms	Combination of Vitrified tiles & Wooden flooring.
Balconies	Vitrified tiles.
Staircase	Kota stone.

Woodwork	Wardrobes in all the bedrooms.
----------	--------------------------------

TOILETS

Wall	Printed glazed imported ceramic tiles.
Flooring	Non-skid ceramic tiles.
Fittings	Premium quality CP fittings with bathtub (in 1 toilet), shower panel, towel rail and mirror.

WINDOWS	UPVC (Unplasticised Poly Vinyl Chloride) windows.
---------	---

KITCHEN

Platform	Modular Kitchen Cabinets.
Wall	Working platform in granite top with stainless kitchen sink.
Fittings	Ceramic tile above working platform. Hot and cold supply with CP fittings.

DOORS

Hardware	Laminated moulded doors. Brass Hardware with Chrome Polish, brass handles on main doors.
----------	---

PARKING

ELECTRICAL

WATER SUPPLY

POWER BACK-UP

SECURITY

Covered and open car parking.

Modular Switches
TV & Telephone points in all Bedrooms & Drawing/Dining.

24 hours treated water supply.

Back-up for every flat with extra charges.

Security arrangement like CCTV, intercom facility.

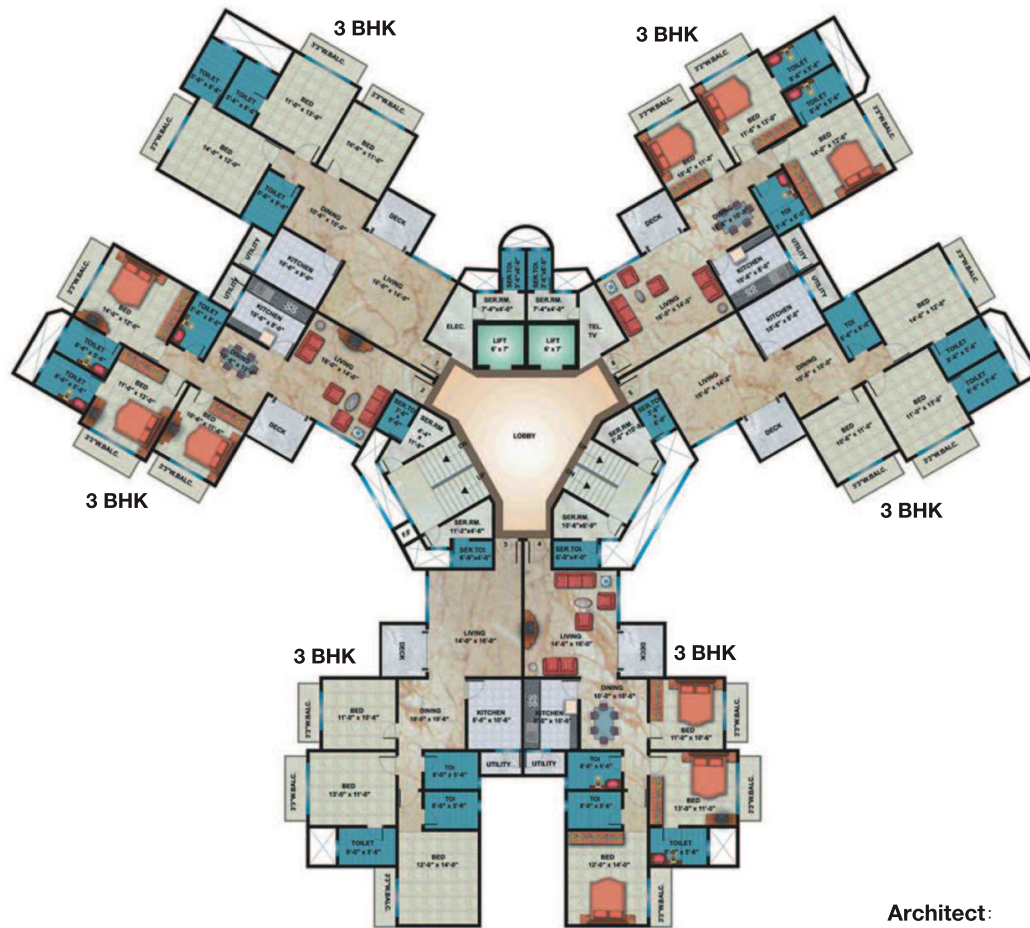


flat types



4 BHK (3000 Sq. Ft. Or 278.71 Sq Mtrs)

3 BHK (2450 Sq. Ft. Or 227.62 Sq Mtrs)



3 BHK (1700 Sq. Ft. Or 157.93 Sq Mtrs)

Architect:
Hafeez
Contractor
29, Bank Street, Mumbai.

